



2018 ANNUAL REPORT





CONTENTS

Statement of Purpose	1
Chair & CEO's report	2
Where we work.....	4
Our programs	7
Partnerships.....	25
Financials.....	30
Our wantoks	41
Contact us	45



KTF is an Australian not-for-profit organisation registered with the Australian Charities & Not-for-profits Commission. KTF is a member of the Australian Council for International Development and adheres to the ACFID Code of Conduct. Complaints relating to a breach of the ACFID Code of Conduct can be made to the ACFID Code of Conduct Committee. KTF holds full accreditation with the Australian Department of Foreign Affairs and Trade and is endorsed as a Deductible Gift Recipient. Donations of \$2 and over are tax deductible in Australia.

STATEMENT OF PURPOSE AND INSPIRATION



We work with people and communities to improve the lives and futures of Papua New Guineans

To keep the spirit of Kokoda alive

CHAIR & CEO'S REPORT



Ian Kemish AM
Chair

The International Women's Day celebrations this year provided a wonderful opportunity to celebrate the great achievements of women, right across Papua New Guinea, in often very challenging circumstances. We are proud of two extraordinary members of the KTF family, Petra Arifeae and Raylance Mesa, who were awarded Westpac Outstanding Women Awards for their contributions to the development of Papua New Guinea. Petra was recognised for her outstanding work overseeing the roll-out of KTF's Teach for Tomorrow project, and Raylance, one of our Archer Leaders, for her contributions towards development and climate change mitigation with Finschafen communities.

Our Teach for Tomorrow project came to its conclusion this year, with 3,685 elementary teachers now trained across 14 Provinces in PNG: Oro, Gulf, Milne Bay, Morobe, Manus, New Ireland, Simbu, Central, NCD, Sandaun, Enga, Southern Highlands and Hela Provinces and the Autonomous

Region of Bougainville. Together, these teachers deliver schooling to more than 136,000 children. Now that they are fully trained and certified, these men and women can remain in the profession and access Government, Church or NGO-funded payroll positions. The tenacity and commitment of the teachers we have worked with over the past two and half years has been awe-inspiring. Some had effectively volunteered to continue, without pay, in the profession for more than 20 years. Their love and passion for teaching is rivalled only by their desire to ensure that this generation of elementary aged school children will not miss out, and will have access to rich learning opportunities setting them up for successful futures.

Now with a presence in 16 Provinces, KTF's development programs have expanded along the Teach for Tomorrow trajectories. To date, our partnership with Australian charity, SolarBuddy, has distributed more than 19,000 solar lights to children living in energy poverty. Our Village Connect project has installed household solar lighting and

energy systems onto every home, school, health facility and community centre along and around the Kokoda Track.

Our work in the health sector ensures that critical facilities across the catchment region are operational, providing lifesaving primary healthcare and pre- and post- natal care for mothers and babies to a catchment population of more than 40,000 people. Our innovative vision testing system has prescribed spectacles to people in remote regions and we have trained community health workers from eight Provinces across the country in PNG's first ever postgraduate course specialising in eye health.

As we move into the next strategic phase of the organisation's journey we continue to invest in the resourcing of our teams in PNG and Australia as well as the Kokoda College. We are determined to ensure that our program expansion is adequately supported and our impact always measured. Taking guidance and input from the partners that we work with, we are ensuring that our approach

is evidence-based; aligned with Government priorities; and based on principles of fairness and equality, protection and empowerment, and long-term sustainable change.

Now in its 9th year, our Archer Leaders Development program supports young PNG leaders who continue to inspire and give us a course of clear direction for the future. PNG's young leaders – like Raylance – are applying new approaches to entrenched and complex challenges. They know that these issues will only be addressed through real collaboration, partnerships and new ways of problem solving.



We couldn't do any of this without you, our supporters. We are forever grateful to you for your generous contribution.

Together we are making a difference in supporting our closest neighbour.



Genevieve Nelson
CEO

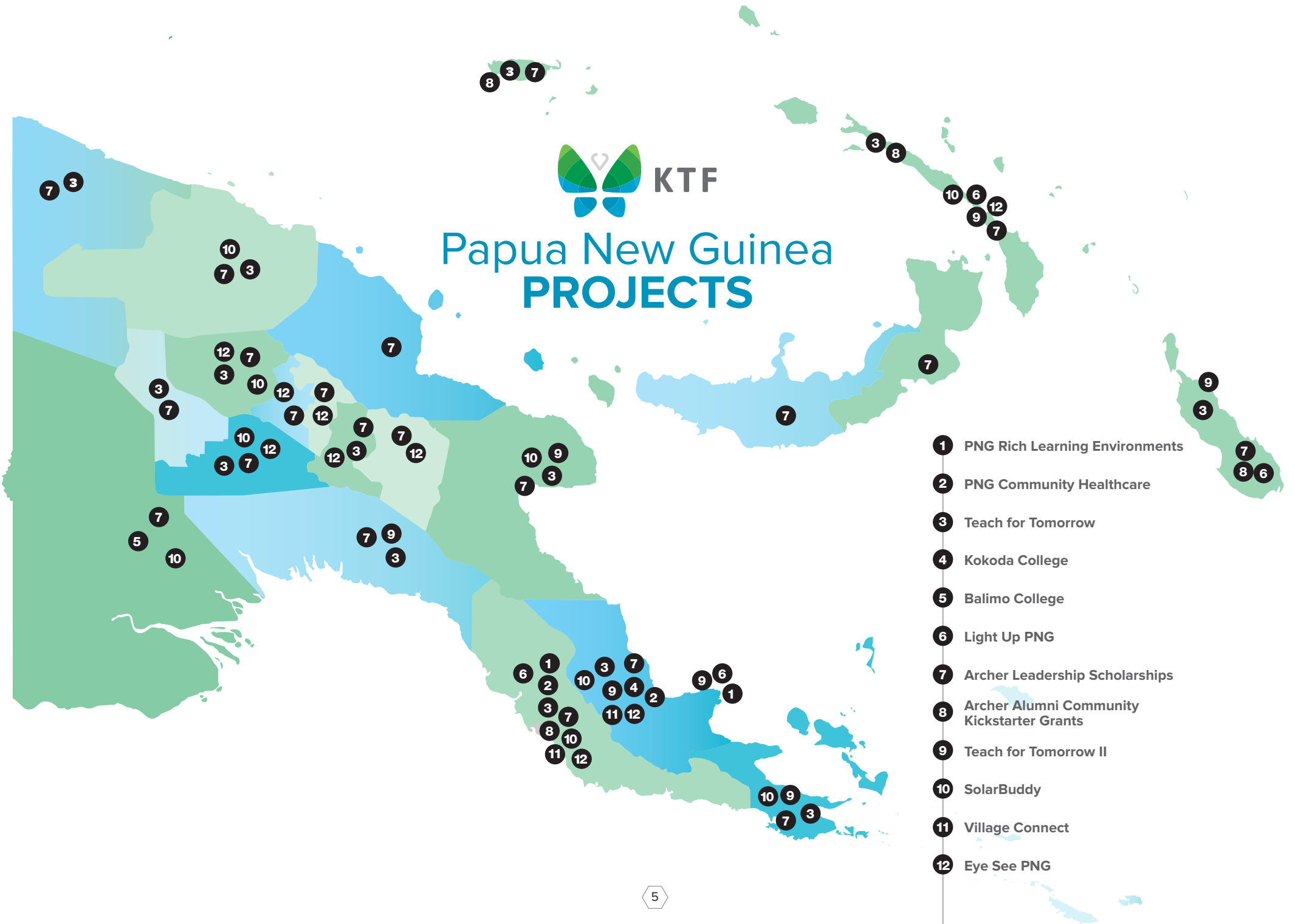


Where we work



KTF

Papua New Guinea PROJECTS



- 1 PNG Rich Learning Environments
- 2 PNG Community Healthcare
- 3 Teach for Tomorrow
- 4 Kokoda College
- 5 Balimo College
- 6 Light Up PNG
- 7 Archer Leadership Scholarships
- 8 Archer Alumni Community Kickstarter Grants
- 9 Teach for Tomorrow II
- 10 SolarBuddy
- 11 Village Connect
- 12 Eye See PNG

- PNG Schools Project
- Healthy Communities
- Village Connect
- Light up PNG
- SolarBuddy
- Kokoda College
 - Teach for Tomorrow
 - Eye See PNG
 - First Aid Training
 - FODE Studies
- Sight for PNG
- Eye See PNG



PROJECTS along the KOKODA TRACK



Our Programs

education • health • livelihoods • leadership



Education

TEACH FOR TOMORROW



“ Participants were grateful to learn new information about teaching and learning and they were rejuvenated to bring their teaching programs to another level when they returned to their classrooms. Participants mentioned that there was new information gained about how to plan interactive activities and when designing learning activities always consider gender equality and be child centred.

One participant mentioned that he lived right at the border of Southern Highlands and Hela Provinces and he had almost given up on his teaching profession due to the long wait times for the training to return. When he heard about our training he was not sure at first but decided to attend and he never looked back! The learning was fun and engaging and the training enabled him to become fully certified and recognised by both the Department of Education, his school board and the local community which has been supporting him all this time.

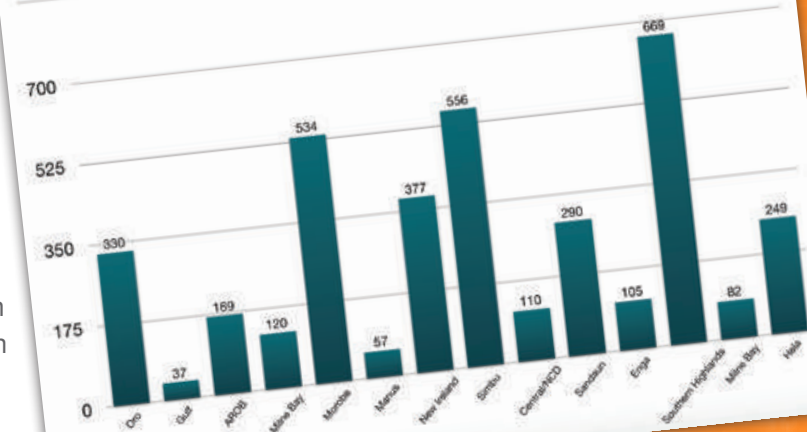
Petra Arifeae - Programs Manager

Over the past two years, KTF has delivered its Teach for Tomorrow project across 14 Provinces in rural and remote PNG. These teachers were part of a large cohort of partially-trained elementary teachers who between 2016-2018 needed to urgently complete their Certificates of Elementary Teaching via the mixed-mode, multi-grade, SIU training program.


KTF partnered with PNG Education Institute, the National Department of Education and Provincial Departments of Education to deliver the final

instalment of the training required for completion and certification. Our graduates are equipped to deliver the highest quality education to children in Preparatory, Grade 1 and Grade 2 which they are doing across the country. Our graduate teachers are dedicated to their profession and are currently teaching 136,000+ children across PNG. Having access to highly trained teachers ensures children from remote villages receive a great education and are encouraged to stay in school.

NUMBER OF ELEMENTARY TEACHERS TRAINED = 3,685





 **54%**
FEMALE TEACHERS

 **46%**
MALE TEACHERS

11% OF TEACHERS REPORTED HAVING A DISABILITY;

with the lowest percentage in AROB (9%) and Southern Highlands (9%) Provinces and the highest in Enga (12%) and Hela (21%) Provinces.

136,698

CHILDREN REMAIN IN SCHOOL due to their elementary teachers completing their formal training and retaining their teaching positions



“ I have been teaching for 11 years without proper training and certification. My trainers and lecturers taught me how to plan better lessons using the theme-webs and how to create practical activities for students. I am so excited to teach in 2019.

Samuel Kopari
Halungi Elementary School

“ I was really satisfied with how effectively and efficiently the Teach for Tomorrow training was delivered during the past three years across 14 provinces. The training really enhanced the skills and knowledge of these teachers and I am very confident children in remote locations will be well taught in 2019 and for many years to come. Thousands of teachers were trained and will now remain in their profession. It is good to know that these teachers will be moved over to the government payroll soon.

Petra Arifeae
KTF Programs Manager

PREPARING FOR THE FUTURE

PNG is on the brink of transitioning to a new structure of schooling. In order to prepare for this transition, there is an urgent need for more teachers to be trained and for existing teachers to receive in-service up-skilling and professional development. This is especially the case for teachers from remote and rural regions of PNG.

Our Teach for Tomorrow II project fosters the skills, confidence and knowledge of teachers from these remote areas to strengthen the quality of education being delivered, enhance their commitment to the profession, and support their transition to the new structure of schooling. In 2018, training was delivered to 61 provincial trainers who in turn provided upskilling workshops to 2,481 elementary teachers across the Provinces of New Ireland, Milne Bay and the Autonomous Region of Bougainville.

“*The reinvigorating and updating of skills for a teacher cannot be underestimated. For a teacher to resource groups of students with up-to-date methods and relevant and invigorating material, they need ongoing support and training.*”

Martha Bentley, Programs Manager

Our Kokoda College project supported a cohort of early school leavers on a pathway of matriculation so that they gain the minimum entry qualifications to enrol in pre-service teacher training at the College in 2020. Forty-seven students undertook second-chance education pathways at the College in 2018 across Grades 10 - 12 and all are committed to tertiary training and careers in teaching and health work for the benefit of communities across remote regions in PNG.

“In most areas students are not selected [for tertiary studies] because of their cut off marks.

So FODE is the only opportunity for students who are left out to upgrade their marks in FODE Centres.

But where I come from there are no FODE Centres so the opportunity to come to Kokoda was a blessing.”

(FODE Student)

INVESTING IN SCHOOLS



Our work in supporting the infrastructure and operations of schools throughout the catchment region continued in 2018 with the support of 20 teacher postings and the resourcing of 46 elementary and primary schools. Together, these schools deliver an education to 6,610 children in the region. The Kokoda College is fostering pathways for people from the catchment region into teacher training so that elementary and primary schools in remote and rural PNG can remain open.”

“ PNG Schools has enabled my school to stay open and to operate effectively for the past 4 years. Previously we faced major challenges. Our government-funded teachers would not stay in their posts and our school inspections did not result in additional staff being posted to the school. With KTF’s support of a regular supply of school resources and the funding of two full-time teachers, we have been able to provide a quality education to 150 children over 4 years. We also received training from KTF and ongoing mentoring and support. In addition, whilst we learnt how to run a school on limited resources and utilising our natural environments, KTF also provided a regular supply of educational resources

and classroom materials which were a life-line as otherwise we would be teaching with very little. A more recent partnership with the Kokoda Initiative also saw our classrooms rebuilt and we now have beautiful facilities for our children to learn in. We are focused on providing a play-based curriculum aligned with the Governments standards-based curriculum; and being a part of the PNG Schools Project has enabled us to thrive and deliver a high quality learning to all children in our catchment region.”

KTF Teacher

Gorari Elementary School





Health

EYE SEE PNG



Our exciting work in eye health expanded in 2018, to not only train community health workers in specialist eye care skills, but to also test and roll-out a vision testing innovation which is the first of its kind in PNG. Vision impairment is both a cause and consequence of poverty. There is a high prevalence of blindness and vision impairment in PNG, especially in remote areas where access to health services are limited. In 2018, KTF trained 33 Community Health Workers from across the New Ireland Province and the Autonomous Region of Bougainville taking our total number of CHWs trained over the past two years to 88.

“ Previously, we were trying to refer our eye patients all the way to town for the doctor or a trained nurse who went to further studies at a university to diagnose patients. But now I know that most of the patients can actually be diagnosed and treated at our own facility! And we now have the skills and knowledge to transfer to people that we serve in the village to prevent damage to the eye and any things that contribute to the damage of the eye.”

CHW Training Participant,
New Ireland



SIGHT FOR PNG

Currently there is no access to vision testing or prescription spectacles for most people in rural PNG. Travelling to Port Moresby for eye-testing is impossible for most and custom-made spectacles are not affordable. This is certainly the case for the rural Kokoda region whereby the only options for vision testing is in Popondetta or Port Moresby (or via YWAM ships); or prescription spectacles can sometimes be purchased at local trade stores without any vision testing taking place. This almost always leads to the wrong prescription spectacles being assigned to a person's required correction.

Our Sight for PNG project enables innovative and efficient refractive error testing at scale across remote and rural PNG and the provision of affordable prescription spectacles to those who require

them within the majority subsistence population. Currently in pilot phase, our intervention is the first of its kind, in that it enables unskilled personnel to test for refractive error via a simple 'Refraction Wheel' that can be administered efficiently. Training is delivered to teachers, village health volunteers, or community leaders and they are equipped with the skills to test for refractive error. Our spectacle-assembly kit provides durable, flexible, and appealing frames as well as the suite of lenses required to build prescription glasses on the spot.

“ Before I never read books and now I can read. Now I can thread my needles to make my bilums. The glasses have made it possible to do all this.”

Female,
aged 48 years, reading glasses.



**3 PROTOTYPE
TESTING WHEELS
MANUFACTURED**



**12 PEOPLE
TRAINED IN TESTING
EQUIPMENT**



**1,800 PEOPLE
HAD THEIR EYES TESTED**



**1,200
PRESCRIPTION
GLASSES PROVIDED**



**12 VILLAGES
REACHED BY
VISION TESTERS**

HEALTHY COMMUNITIES



KTF continues to support the operations of eleven aid posts, health centres and hospitals across the Oro and Central Provinces by providing a quarterly supply of vital drugs and medicines, keeping health posts open and accessible year round. In 2018, KTF supported the postings of Rodney, Colin and Onesmus in Buna, Ronu in Kou Kou and Iori in Sogeri. In late 2018 we welcomed Margaret to Buna and Dick-Larry to Sanananda and relocated Jackson to Boridi, Alice to Bagaou and Onesmus to Hariko, significantly bolstering health support in rural areas.

In October, in partnership with the local village, a new aid post facility was constructed in Sanananda in the North of Oro Province. KTF is funding the salary of a new health worker to operate this post. Prior to the opening, people in this village were required to walk 2 hours to access health services.

Four of KTF's Health Workers undertook life-saving vaccination patrols for Polio in response to an outbreak of the disease in 2018. A little under 7,000 children aged up to 15 years of age were vaccinated during these patrols.

In addition to providing health care, the Community Health Workers engage in community education, advising on hygiene, diet, disease prevention (including HIV and TB), and offer antenatal and post-natal care. Our health facilities together provided life-saving primary health care to a catchment region of over 40,000 people.





40,000 PEOPLE
accessing primary healthcare



11 HEALTH FACILITIES
open & operating

88% HEALTH FACILITIES
open on Kokoda Track;

100% OPEN IN
NORTHERN BEACHES
(compared to 40% in Oro Province)



7,000
CHILDREN VACCINATED
AGAINST POLIO



Livelihoods

LIGHT UP PNG



In PNG, 6.3 million people live without access to the electricity grid. The lack of reliable light limits people in undertaking daily activities such as business, reading, schoolwork, and household chores. It also increases safety and security risks for families as darkness provides an easy cover for crime during the night. KTF's Light Up PNG project works with female entrepreneurs to establish sustainable, solar-based micro-enterprises in remote areas from which they can earn a reliable income and provide solar solutions to their communities. We build the capacity, skills and confidence of women and

support them on their journey to lift their families and communities out of poverty.

In 2018, KTF worked closely with three existing women's groups in Kimaden & Pinkidu in New Ireland Province and at Lontis in the Autonomous Region of Bougainville. All three women's groups were supported with start up capital, microbusiness training and technical skills training. All three groups made their first reinvestment from the sales of the lights and a new order of stock was delivered to each of the groups in 2018.

“ The lights helped the community so much; solar lights helped mothers, students, teachers and community health workers to complete their work after dark.”

Gertrude, Women's Coordinator,
Pinikidu Women's Group.

“ This program enabled putting into practice the No Credit Policy, which was great because it empowered us to enforce it when we haven't been able to before. This practice has helped us in our other small business ventures as well”

Ursula, Women's Group Member,
Pinikidu Women's Group.

LOOKING AHEAD

KTF is excited to launch new business models, new products and new women's groups in 2019. KTF will also be inviting applications from women or women's groups from right across PNG to access seed funding to further grow established ideas or business practices.



SOLARBUDDY

KTF's partnership with Australian charity, SolarBuddy, has to date distributed 19,000 solar lights to children and teachers across remote and rural areas in PNG.

The lights have resulted in a 78% increase in study time by children after dark; as well as an 80% reduction in family expenditure on kerosene.

Qualitative feedback from the students and teachers has been extremely positive with the lights having an impact on quality of life and educational, health and economic outcomes for families in receipt of lights.

Impact on education, wellbeing and feelings of security: "The solar light is so important to me and my brothers and sisters. We have all received our own SolarBuddy light to own by ourselves and use for our personal needs. I use my light for doing my studies, walking around the house and finding things after dark. I feel safer and I enjoy my life more having my very own solar light. I don't have to worry about not being able to see or do anything after dark, or spill kerosene on my skin or breath its smoke. Solar is so much better."

Reduction on expenditure and use of kerosene: "Ever since I received my SolarBuddy light, my family has not had to spend any money on kerosene. My brother and my two sisters are also at school and we have now all received a solar light from KTF and SolarBuddy. Now that there are four solar lights in the house, it means that my parents don't need kerosene any more. This is better as kerosene is very very dangerous and it hurts our eyes when we read and our chest when we breathe."

"We've done away with kerosene because it makes the house very smelly and is unsafe; solar is a great alternative. Most people in this region have now done away with using kerosene. Some people used to have shortage of breath; this is now cut down. Using the lights is easier."

Flexibility with management of household activities and homework: "The solar light is used for so many reasons. We sometimes read books at night to each other. We can do our school work after the sun sets because before the sun sets we

are very busy - helping our parents in the garden or just sometimes having fun. Now we have more time in the dark to do homework so we don't have to rush to do it before dark."

Economic benefits for whole families: Our family finances have improved a lot. I don't have to go running around to the store to buy batteries or kerosene anymore; we have the solar lights instead and this has saved us a lot of Kina. Our productivity has improved a lot. One example is that our parents don't have to spend money on kerosene or batteries anymore. They save this money and can spend it on other items that help improve our lives like school supplies and nice things to eat and have in our villages.



VILLAGE CONNECT

KTF's Village Connect project provides household solar lighting and energy systems to rural and remote communities throughout PNG. The aim of Village Connect is to connect 2,000 households across PNG with solar light by the end of 2019. With improved power and energy solutions, comes opportunities for villagers to engage in businesses and

access communications, technology and other opportunities that improve the livelihoods of PNG people. Households in remote and rural areas for the first time have access to light throughout and outside their homes and an energy station to charge mobile phones and other simple appliances. The energy systems reduce reliance on toxic kerosene and campfires.



In 2018 KTF installed 348 household lighting and energy kits and every single household in every single village along the Kokoda Track now has access to sufficient lighting and an energy source – literally lighting up the track.



Leadership

ARCHER LEADERSHIP PROGRAM



KTF is finding and fostering the next generation of PNG's leaders. Running for 8 years, the Archer Leaders Development Program, takes a cohort of final-year tertiary students who have demonstrated immense commitment to their studies, communities and country on an intensive, experiential leadership development journey. The Archer Leaders are matched with high-profile mentors, undertake work experience and community development projects, have their tuition, boarding and professional

resource needs supported, and undertake a leadership exchange program to Australia. The program develops the confidence, networks, skills, resources and support systems that the young leaders need to exercise exceptional leadership. Their year-long leadership journey as 'Archer Leaders' results in extraordinary young graduates, with lasting networks and the ability and willingness to create much needed change in PNG.

“ The Archer experience is a once in a lifetime opportunity I will always look back and be grateful for. Meeting world leaders in Australia from the corporate world to business and health was indeed life changing. It taught me that no matter where life takes you or wherever you are, you can succeed in creating great change and be an adaptive leader. The key aspects of which are discussed on the year round program. It is both a journey to the outside world and into knowing oneself better in order to become better leaders. I am definitely more confident, open and ready to create change in PNG and beyond.”

Dr Michel Mel, B. Medicine,
University of Papua New Guinea.





ARCHER REIGNITE

The result of the Archer Leadership Program is a powerful group of 50 Archer Alumni – young Papua New Guinean professionals who are committed to building a brighter future for PNG. In December 2018, KTF hosted the inaugural Archer Conference. The aim of the conference was to bring together the Archer Alumni for two days of professional networking, learning and most importantly, to re-ignite the spark that was illuminated when participants first took part in the Archer Leadership Program. The two days comprised of further adaptive leadership workshops and identifying social challenges faced by the alumni in their communities and societies. Guest speakers from a variety of industries were invited to address the group and share how they have used adaptive leadership to approach challenging situations, from both a professional and personal perspective.

Alumni groups worked on developing concepts of community development projects that would address some of the most complex and challenging issues faced in PNG which ranks the lowest of all Pacific nations on the human development index in the world outside of war-torn nations and has a low ranking on Transparency International's Corruption Perceptions Index. As part of the workshops, the five most pressing social challenges facing PNG were identified by the alumni: gender-based violence; corruption; climate; education; and youth. Groups then workshopped potential community development and social impact projects that could be implemented to address such challenges. Ideas included the creation of a documentary addressing Gender-Based Violence to be taken on a roadshow throughout the country and screened as an outdoor cinema in villages followed by focus groups and important discussion. In education, it was suggested that all of the alumni contribute ideas and writing pieces enabling the creation of more

culturally relevant children's books to be distributed to rural and remote areas throughout PNG. In Youth, it was presented that a group of alumni visit schools throughout PNG to share their journey of leadership and inspire young people to study hard, pursue their dreams and always connect and invest with their communities. During the workshop, the climate focussed group discussed deforestation, food security, increasing populations, disease, disasters, rising sea levels and the resettlement of 'climate change refugees' the world's first of whom are from Papua New Guinea.

A highlight of the conference was an event where alumni members were able to meet a wide range of guests from across the corporate and political fields, bridging gaps and enabling members to grow their professional networks with influential leaders from across Port Moresby, Australia and broader PNG.



Partnerships

FINANCIAL PARTNERS

"Tenkyu Tru" to our Platinum Partners



FINANCIAL PARTNERS

"Tenkyu Tru" to our Gold, Silver and Bronze Partners

GOLD

- On Track Expeditions
- Kumul Petroleum Holdings
- KPMG
- Web of Hope Foundation
- International SOS
- Debit & Credit Bookkeeping Solutions
- Lions Club of Park Orchards
- Humpty Dumpty Foundation

SILVER

- Back Track Adventures
- Bougainville Copper Limited
- Department of Veterans Affairs Staff Giving
- Victorria Police Wyndam
- Executive Excellence
- Getaway Trekking
- Intrepid Foundation
- Australian Ethical
- Peters Family Foundation
- RSL & Services Clubs Association
- Merrylands RSL Club
- PNG Security Congress
- John Chase

BRONZE

- Elizabeth Carr
- Bernie Egan
- Peter Barrow
- Peter Parry
- Wendy Brooks
- Forward Ink
- Icon Adventures
- PNG Trekking Adventures
- Chesterhill-Carramar RSL Sub-branch
- Nowra-Greenwell Point RSL Club
- Merebein RSL Sub-branch
- Third Battalion
- Kangaroo Flat RSL Sub-branch
- Redfern RSL Sub-branch
- Kilmore RSL Sub-branch
- Bellingen River RSL Sub-branch
- Ringwood RSL Sub-branch
- City of Liverpool RSL Sub-branch
- Bonalbo RSL Sub-branch
- Wangkoop / Apsley RSL Sub-branch
- Benalla RSL Sub-branch
- Concord RSL Sub-branch
- Bondi Junction-Waverley RSL Sub-branch
- Rotary Club of Camberwell
- Tufi Dive Resort

INKIND PARTNERS

"Tenkyu Tru" to our wonderful in-kind supporters who give up their time and services to assist KTF



Drs Sarah & Phil Crowe

Warwick Brook, Doug May
& Garrie Gibson

Alana King

Kate Johnson

CO-DELIVERY PARTNERS

Throughout 2018, KTF established new partnerships and strengthened existing partnerships with provincial education and health authorities and other in-country NGOs and organisations throughout PNG. KTF holds these co-implementing partners in the highest esteem and looks forward to a fruitful and ongoing relationship.

Oro
Department of Education
Department of Health



Gulf
Department of Education



Bougainville
Department of Education



Milne Bay
Department of Education



Morobe
Department of Education



Kokoda Initiative

Manus
Department of Education



Simbu
Department of Education



Central
Department of Education
Department of Health



East Sepik
Department of Education
Department of Health



New Ireland
Department of Education
Department of Health



SAGO NETWORK

Hela
Department of Education



Southern Highlands
Department of Education



Western
Department of Education





Financials

CONSOLIDATED STATEMENT OF COMPREHENSIVE INCOME

Financial Year to 31 December 2018

REVENUE	2018 (\$)	2017 (\$)	EXPENDITURE	2018 (\$)	2017 (\$)
DONATIONS & GIFTS			INTERNATIONAL PROGRAMS		
Monetary			Funds to International Programs		
• Donations	1,568,734	1,455,741	• Education	1,441,379	1,032,511
• Ralph Honner Oration Dinner	125,974	121,213	• Health	229,484	225,544
• Kids of Kokoda Lunch	33,970	21,385	• Livelihoods	242,344	130,819
			• Leadership	189,502	164,750
Non-Monetary			Goods to International Programs		
• Donation of Goods	231,250	89,750	• SolarBuddy Lights Program	231,250	89,750
Total	1,959,928	1,688,089	Program Support Costs	110,750	88,741
GOVERNMENT GRANTS			FUNDRAISING COSTS		
• DFAT (ANCP)	728,690	433,289	Public Events		
• DFAT (AHC)	-	107,920	• Ralph Honner Oration Dinner	50,855	53,867
• DFAT (KI)	76,561	-	• Kids of Kokoda Lunch	10,225	12,200
			General Fundraising	129,347	111,556
• Other Income	8,488	7,078	ACCOUNTING & ADMINISTRATION	152,248	180,838
TOTAL REVENUE	2,773,668	2,236,375	TOTAL EXPENDITURE	2,787,384	2,090,576
			(SHORTFALL) / EXCESS OF REVENUE		
			OVER EXPENDITURE	(13,716)	145,800

CONSOLIDATED STATEMENT OF FINANCIAL POSITION

as of 31 December 2018

	31 December 2018 (\$)	31 December 2017 (\$)
ASSETS		
Current assets		
• Cash and cash equivalents	1,077,043	963,575
• Trade and other receivables	144,087	320,201
Total current assets	1,221,130	1,283,776
Non-current assets		
• Property, plant & equipment	14,777	4,097
Total non current assets	14,777	4,097
TOTAL ASSETS	1,235,907	1,287,873
LIABILITIES		
Current liabilities		
• Trade and other payables	194,082	133,748
• Deferred income	21,003	119,587
Total current liabilities	215,085	253,335
TOTAL LIABILITIES	215,085	253,335
NET ASSETS	1,020,822	1,034,538
EQUITY		
Retained Earnings	1,020,822	1,034,538
TOTAL EQUITY	1,020,822	1,034,538

CONSOLIDATED STATEMENT OF CHANGES IN EQUITY

	Accumulated Funds
	\$
Balance at 1 January 2017	888,738
Surplus for the year	145,800
Balance at 31 December 2017	1,034,538
Balance at 1 January 2018	1,034,538
Surplus for the year	(13,716)
Balance at 31 December 2018	1,020,822

CONSOLIDATED STATEMENT OF CASH FLOWS

	2018 (\$)	2017 (\$)
Cash flows from operating activities		
• Receipts from donors, fundraising activities and government	2,668,964	2,001,929
• Payments to suppliers and employees	(2,503,168)	(1,953,490)
• Net cash provided by operating activities	165,796	48,439
Cash flows from investing activities		
• Payment for property, plant and equipment	(58,481)	(4,744)
• Interest received	6,154	7,078
• Net cash provided by investing activities	(52,327)	2,334
Net increase in cash and cash equivalents	113,468	50,774
Cash and cash equivalents at the beginning of the financial year	963,575	912,801
Cash and cash equivalents at the end of the financial year	1,077,043	963,575

TABLE OF CASH MOVEMENTS FOR DESIGNATED PURPOSES as of 31 December 2018

	Cash available at beginning of financial year	Cash raised during financial year	Cash disbursed during financial year	Transferred in/(out)	Cash available at end of financial year
Education Program ¹	159,572	1,476,435	1,490,563	-	145,444
Health Program ²	-	97,590	249,181	151,591	-
Livelihoods Program ³	-	128,488	261,827	133,339	-
Leadership Program ⁴	-	216,724	211,887	-	4,837
General (non-designated purposes) ⁵	804,002	749,728	342,037	(284,931)	926,762
TOTAL	963,575	2,668,964	2,555,495	-	1,077,043

¹Including FODE, Kokoda College (School of Education, School of Health), PNG Schools, and Teach for Tomorrow

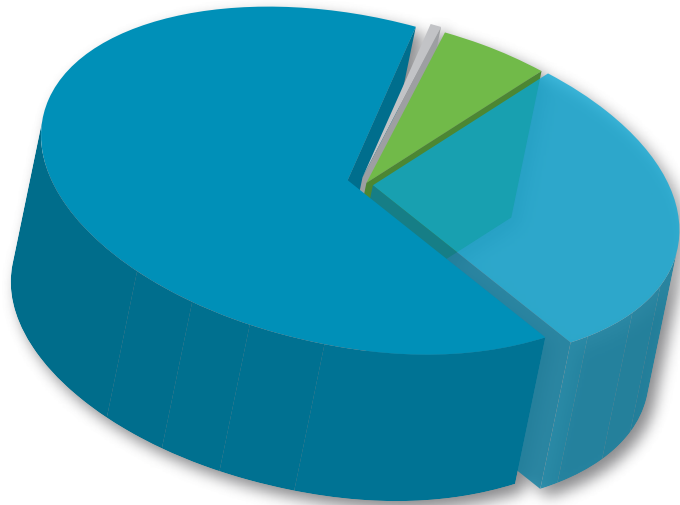
²Including Eye See PNG, Sight for PNG, and Community Health Care

³Including Village Connect, Light Up PNG

⁴Including Archer Leadership Program and Community Kickstarter Grants

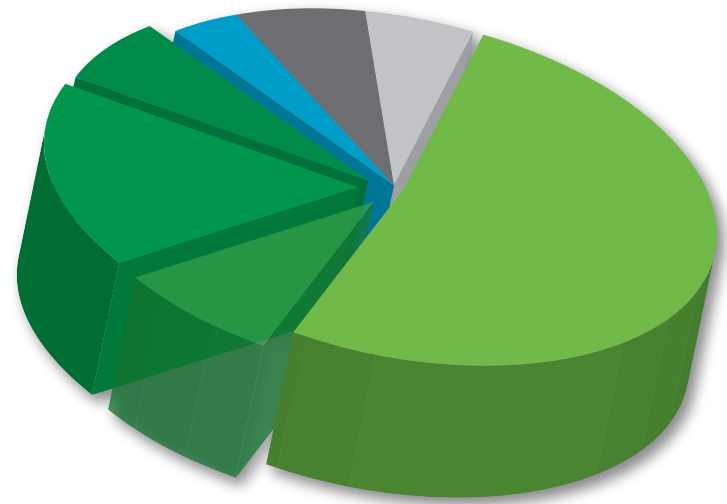
⁵Funds quarantined for KTF's education projects including Teach for Tomorrow and Kokoda College

WHERE THE MONEY COMES FROM



- Donations: \$1,799,984
- Government: \$805,251
- Events: \$159,944
- Other: \$8,488

WHERE THE MONEY IS SPENT



- Education: \$1,441,379
- Health: \$229,484
- Livelihoods: \$473,594
- Leadership: \$189,502
- International Program Support: \$110,750
- Fundraising: \$190,427
- Administration: \$152,248

KTF aims to keep its fundraising and administration costs to a minimum. In 2018, KTF applied 88% of its total expenditure to the delivery of its International Development Programs in Education, Health, Livelihoods and Leadership. Administration expenditure (5%) covers unavoidable, regulatory and administrative overheads as well as important investment in staff and management systems. Fundraising expenditure (7%) covers the costs of running KTF's events and appeals, upkeep of its website, and other marketing and communication activities.

NOTES TO THE FINANCIAL STATEMENTS

Note 1. Basis of preparation

The Summary Financial Statements have been prepared in accordance with the presentation and disclosure requirements set out in the ACFID Code of Conduct. For further information on the Code please refer to the ACFID website at www.acfid.asn.au.

The Summary Financial Statements comprising the Consolidated Statement of Comprehensive Income, the Consolidated Statement of Financial Position, the Consolidated Statement of Changes in Equity and the Consolidated Statement of Cash Flows for the year ended 31 December 2018 are an extract of the Audited Financial Report of The Kokoda Track Foundation Group (“KTF”) for the year ended 31 December 2018. The Summary Financial Statements were extracted for the purpose of presenting the summarised financial position and performance of KTF to its members in the 2018 Annual Report.

KTF is an entity limited by guarantee. KTF is a not-for-profit entity for financial reporting purposes under Australian Accounting Standards. The Audited Financial Report of KTF complies with Australian Accounting Standards – Reduced Disclosure Requirements adopted by the Australian Accounting Standards Board. The Summary Financial Statements have been prepared under the historical cost basis and are presented in Australian dollars, which is KTF’s functional and presentation currency.

DIRECTORS' DECLARATION

The Kokoda Track Foundation Limited

Declaration under the Charitable Fundraising Act (1991)

I, Ian Kemish AM, Chairman of the Board of Directors of The Kokoda Track Foundation Limited declare that in my opinion:

1. The financial statements give a true and fair view of all income and expenditure of KTF with respect to the fundraising appeals activities for the financial year ended 31 December 2018.
2. The statement of financial position gives a true and fair view of the status of affairs with respect to fundraising appeals activities for the financial year ended 31 December 2018.
3. The provisions of the Charitable Fundraising Act 1991 (NSW), the Regulations under the Act and the conditions attached to the authority have been complied with for the financial year ended 31 December 2018.
4. The internal controls exercised by KTF are appropriate and effective in accounting for all income received and applied by KTF from any of its fundraising appeals.

Signed in accordance with a resolution of the directors:



Ian Kemish AM
Chair
Sydney, 28 March 2019



Independent Auditor's Report

To the members of The Kokoda Track Foundation Limited

Report on the Summary Financial Statements

Opinion

We report on the **Summary Financial Statements** of The Kokoda Track Foundation Limited (the Foundation and Group) as at and for the year ended 31 December 2018. The Summary Financial Statements are derived from the audited financial report of the **Group** (the Audited Financial Report).

In our opinion, the accompanying Summary Financial Statements of The Kokoda Track Foundation Limited are consistent, in all material respects, with the Audited Financial Report, in accordance with the basis of preparation described in Note 1 to the Summary Financial Statements.

The **Summary Financial Statements** comprise:

- Summary consolidated statement of financial position as at 31 December 2018
- Summary consolidated statement of comprehensive income and Summary consolidated of cash flows for the year then ended
- Related notes.

The **Group** consists of The Kokoda Track Foundation Limited and the entities it controlled at the year end or from time to time during the financial year.

Scope of the Summary Financial Statements

The Summary Financial Statements do not contain all the disclosures required by Australian Accounting Standards - Reduced Disclosure Requirements applied in the preparation of the Audited Financial Report. Reading the Summary Financial Statements and this Auditor's Report thereon, therefore, is not a substitute for reading the Audited Financial Report and our auditor's report thereon.

The Audited Financial Report and our auditor's report thereon

We expressed an unmodified audit opinion on the Audited Financial Report in our auditor's report dated 28 March 2019.

Emphasis of matter – basis of preparation and restriction on use and distribution

We draw attention to Note 1 to the Summary Financial Statements, which describes the basis of preparation. The Summary Financial Statements have been prepared to assist the Directors of the Foundation and Group for the purpose of complying with the presentation and disclosure requirements set out in the Australia Council for International Development (ACFID) Code of Conduct. As a result, the Summary Financial Statements and this Auditor's Report may not be suitable for another purpose. Our opinion is not modified in respect of this matter.

This Auditor's Report is intended solely for the Directors of The Kokoda Track Foundation Limited and should not be used by or distributed to parties other than the Directors of The Kokoda Track Foundation Limited. We disclaim any assumption of responsibility for any reliance on this Auditor's Report, or on the Summary Financial Statements to which it relates, to any person other than the Directors of The Kokoda Track Foundation Limited or for any other purpose than that for which it was prepared.

Responsibility of the Directors for the Summary Financial Statements

The Directors are responsible for the preparation of the Summary Financial Statements in accordance with the basis of preparation described in Note 1 to the Summary Financial Statements, including their derivation from the Audited Financial Report of the Group as at and for the year ended 31 December 2018.

Auditor's responsibility for the Summary Financial Statements

Our responsibility is to express an opinion on whether the Summary Financial Statements are consistent, in all material respects, with the Audited Financial Report based on our procedures, which were conducted in accordance with *Australian Auditing Standard ASA 810 Engagements to Report on Summary Financial Statements*.

KPMG

Daniel Robinson

Partner

28 March 2019

KPMG, an Australian partnership and a member firm of the KPMG network of independent member firms affiliated with KPMG International Cooperative ("KPMG International"), a Swiss entity.

Liability limited by a scheme approved under Professional Standards Legislation.

COMPLIANCE & REGULATION

ASIC, ACNC & ATO

As a public company limited by guarantee and a registered charity, KTF is required to comply with the regulations of the Australian Securities and Investments Commission (ASIC) and the Australian Charities and Not-for-Profits Commission (ACNC) Act 2012. This includes complying with Australian Accounting standards and other mandatory professional reporting requirements. The Australian Taxation Office (ATO) has given KTF the status of a Deductible Gift Recipient (DGR) and a Public Benevolent Institution, granted exemption from Income Tax, and provided concession for Fringe Benefits Tax and GST. Reporting requirements comprise mainly annual fringe benefits tax returns, quarterly Business Activity Statements and monthly Pay-as-you-go (PAYG) submissions.



Australian
Charities and
Not-for-profits
Commission

FINANCIAL AUDIT

KTF undergoes an annual audit of its financial statements. KPMG has undertaken KTF's annual audit of financial statements for the past 6 years. KTF publishes its full financial statements on its website www.ktf.ngo and submits these to the ACNC, Australian Council for International Development, and DFAT's Australian NGO Cooperation Program. KPMG had undertaken KTF's audit on a pro bono basis for three years. Since 2017, KPMG undertook KTF's audit at a low bono cost. Fees in relation to audit services in 2018 were \$15,000 (excl GST). We are extremely grateful to KPMG for their loyal support.



AUSTRALIAN COUNCIL FOR INTERNATIONAL DEVELOPMENT

KTF is a member of the Australian Council for International Development (ACFID) and a signatory to the ACFID Code of Conduct. ACFID is the peak body for aid and international development NGOs and its code of conduct upholds the highest standards of ethics, effectiveness and accountability. For further information on the Code, please refer to the ACFID Code of Conduct Guidance Document available at: acfid.asn.au. Complaints relating to a breach of the ACFID Code of Conduct, by an ACFID member can be made at the ACFID Code of Conduct Committee (www.acfid.asn.au/code-of-conduct/complaints).



AUSTRALIAN NGO COOPERATION PROGRAM

KTF holds full level accreditation as an NGO with the Australian Government's Department of Foreign Affairs and Trade (DFAT). As part of this accreditation, KTF receives funding through the Australian NGO Cooperation Program (ANCP). Our accreditation is maintained via a rigorous evaluation process that is undertaken every five years, involving an in-depth assessment of our management capacity, systems, operations and linkages with the Australian community against a set of agreed criteria. Accreditation ensures the transparent and accountable application of funding to the delivery of effective development programs.



FEEDBACK & COMPLAINTS

We value the contribution our supporters, donors and volunteers make to our work; so if you have a complaint or any feedback please let us know. We have a process for handling any complaints. Our complaints policy and process can be found on our website www.ktf.ngo or, if you wish to lodge a complaint about KTF, please email admin@kokodatrackfoundation.org or call our office (02) 9252 2992 or send mail to: PO Box 184 Balmain NSW 2041



Our Wantoks

OUR BOARD



Ian Kemish AM
Chair



Elizabeth Carr AM
Deputy Chair



Dr Genevieve Nelson
Chief Executive Officer



Bernie Egan
Treasurer



Peter Barrow
Director & Company Secretary



Bill James
Director



Stephannie Kirriwom
Director



Wendy Brooks
Director



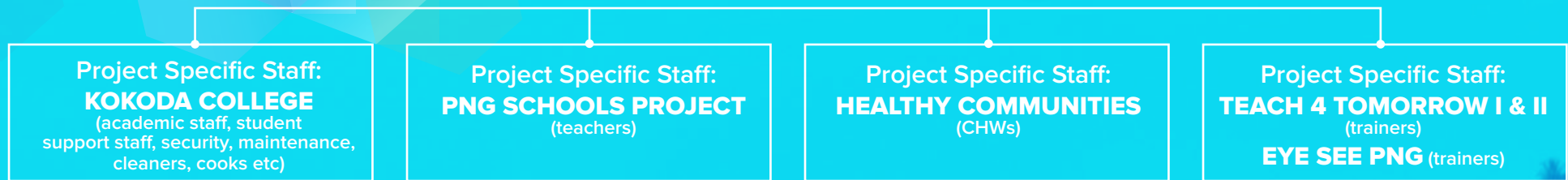
Yahoo Serious
Director



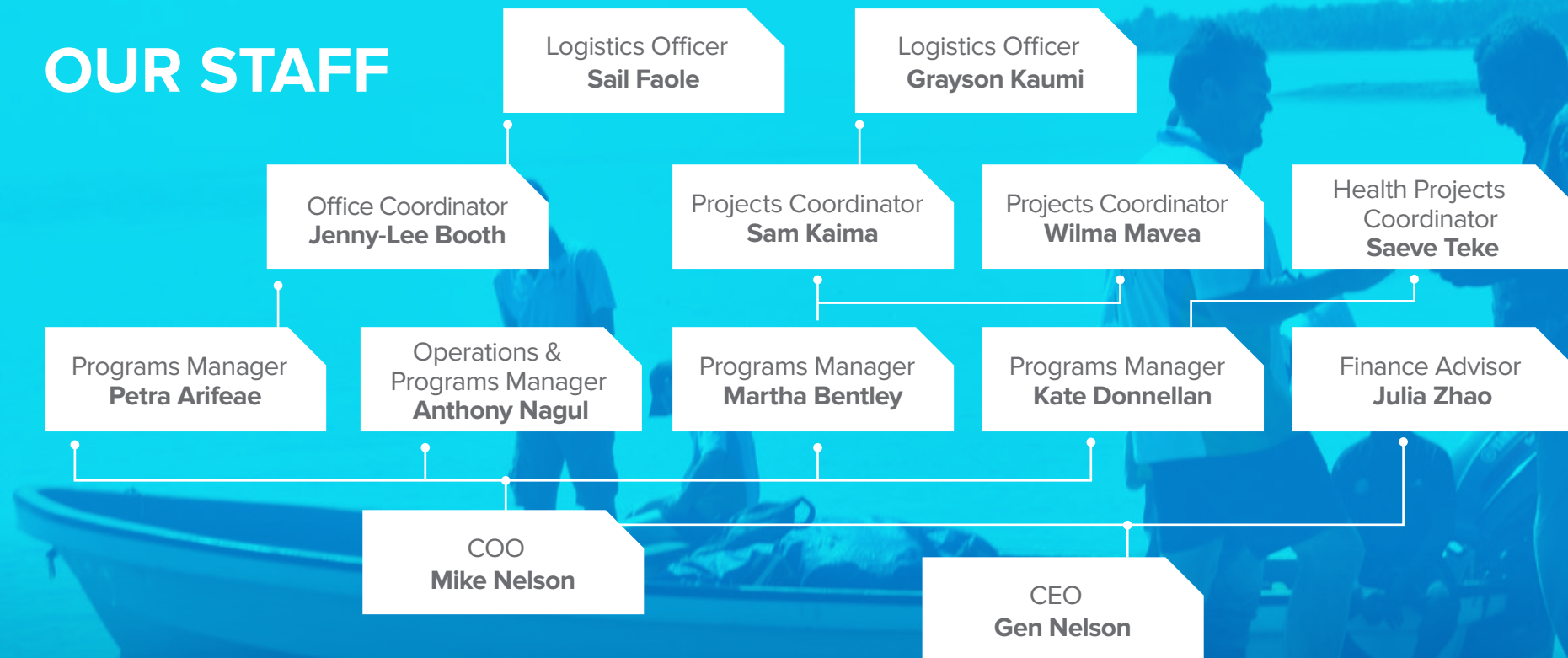
Dr Andrew Moutu
Director

Thank you to our voluntary board
for all of their hard work and commitment to
KTF throughout 2018

Communities We Serve



OUR STAFF



Special thanks to our dedicated staff who all share a passion for assisting Australia's nearest neighbour. In 2018 we welcomed Jenny-Lee in Sydney. In early 2019 we welcomed Anthony in Port Moresby. KTF farewells Caitlin, Sebangaz & Saeve and wish them every success in their future endeavours.

OUR AMBASSADORS AND PATRON



Sir Kostas Constantinou
OBE (Patron)



Sharyn Ghidella



Michael Usher



Cronulla Sharks



Tania Nugent



Patrick Lindsay AM



Amelia Kuk



Will Genia

Thank you to our Patron and incredible team of Ambassadors who continually advise and assist with promoting KTF across Australia, PNG and internationally.

Contact Us



KTF

www.ktf.ngo

Email: admin@kokodatrackfoundation.org

Phone: +61 2 9252 2992

AUS Office: Level 1, 274 Darling Street, Balmain, NSW, 2041

PNG Office: Ground Floor, The Face Building, along Champion Parade, Downtown, NCD

Postal: PO Box 184, Balmain, NSW, 2041





KTF